
Setup Remote Access via P2P using Optiview VMS

Pre-Requisites

- SN Number of device located on bottom of device recorder. Can also be located from the local menu of the recorder under menu -> system info or from Web service page then go to Setup -> Network -> P2P
- P2P must be enabled from the main menu of the recorder under Settings -> Network -> P2P or from Web Service under Setup -> Network -> P2P.

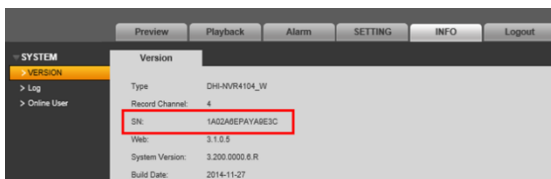
Step by Step Instructions

1. Locate the serial number of your NVR or DVR. The serial number can be found at the following locations:

- On the underside or side of the unit



- In the web interface, under Info->Version



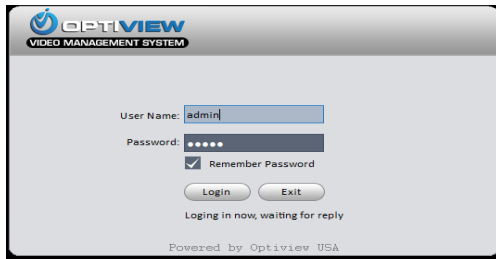
- On the system interface under Main Menu->Settings->Network->P2P



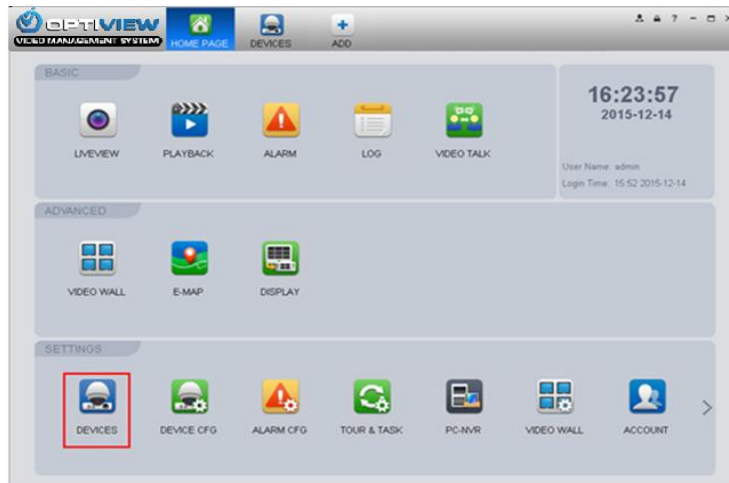
- On the system interface under Main Menu->Info->System->Version



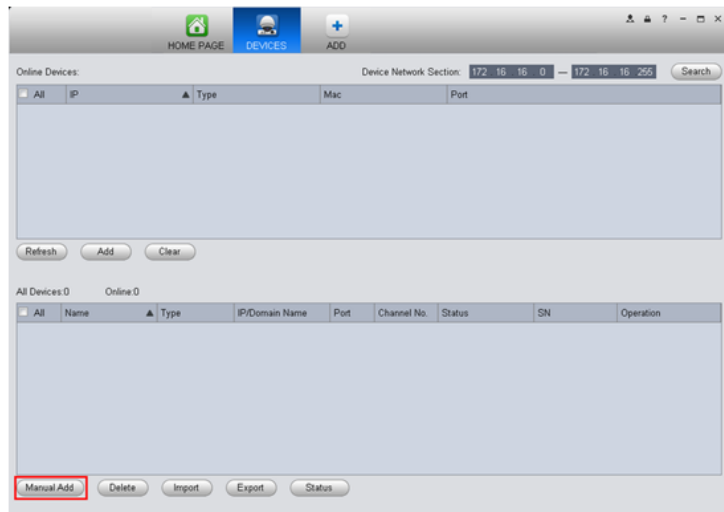
2. Launch Optiview VMS . (Default credentials are admin:Admin1.0)



3. Click, "Devices"



4. Click, "Manual Add"



5. Input the following:

- Device Name:(Any Name)
- Register Mode: SN
- SN: (Your Device's Serial)
- Group Name: (Any Group)
- User Name: admin

- Password: admin (or your own NVR or DVR Password)



The 'Manual Add' dialog box is shown with the following fields and values:

Field	Value
Device Name	My NVR
Register Mode	SN (For device with P2P functi...)
SN	1A02A6EPAYA9E3C
Port	37777
Group Name	Default Group
User Name	admin
Password
Device SN	
Type	DVR
Video Input	
Video Output	
Alarm Input	
Alarm Output	

Buttons: Get Info, Save and Continue, Add, Cancel

6. Click, "Get Info"



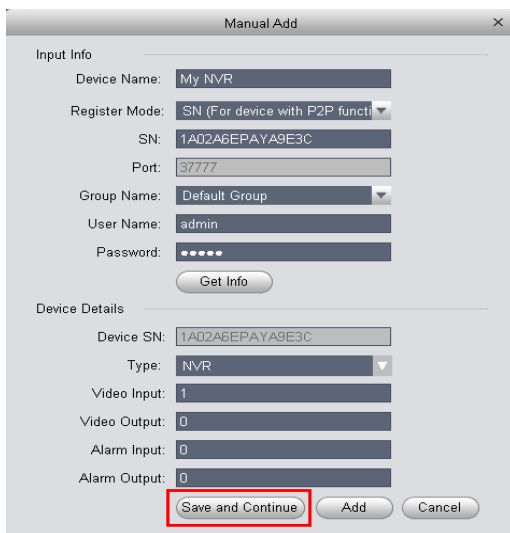
The 'Manual Add' dialog box is shown with the following fields and values:

Field	Value
Device Name	My NVR
Register Mode	SN (For device with P2P functi...)
SN	1A02A6EPAYA9E3C
Port	37777
Group Name	Default Group
User Name	admin
Password
Device SN	1A02A6EPAYA9E3C
Type	NVR
Video Input	1
Video Output	0
Alarm Input	0
Alarm Output	0

Buttons: Save and Continue, Add, Cancel

The 'Get Info' button is highlighted with a red box.

7. Click, "Save and Continue"



The 'Manual Add' dialog box is shown with the following fields and values:

Field	Value
Device Name	My NVR
Register Mode	SN (For device with P2P functi...)
SN	1A02A6EPAYA9E3C
Port	37777
Group Name	Default Group
User Name	admin
Password
Device SN	1A02A6EPAYA9E3C
Type	NVR
Video Input	1
Video Output	0
Alarm Input	0
Alarm Output	0

Buttons: Save and Continue, Add, Cancel

The 'Save and Continue' button is highlighted with a red box.

8. After a few moments, will connect to the NVR/DVR and display as, "Online"

