



OPTIVIEW

MANUFACTURER & DISTRIBUTOR



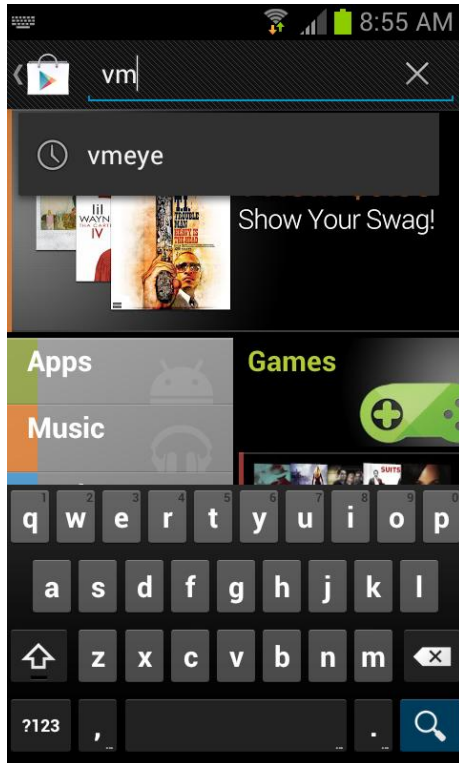
CCTV • MegaPixel • Infrastructure • Accessories

vMeye APP FOR ANDROID DEVICES

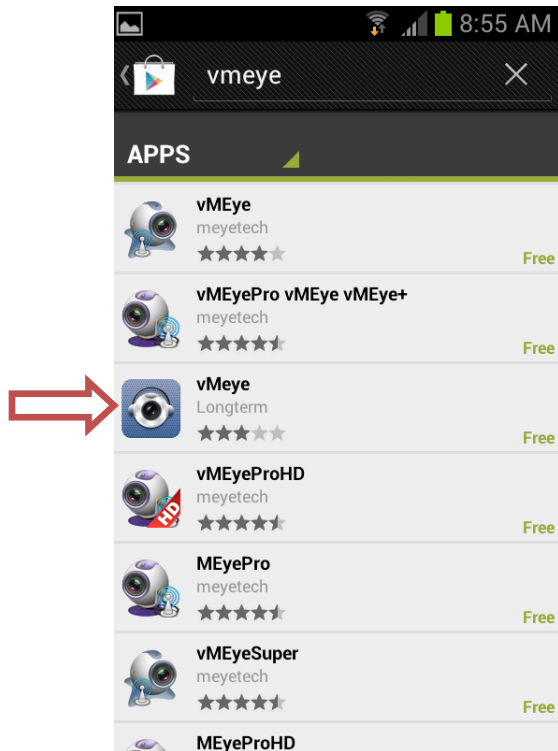
This app is neither developed nor maintained by Optiview. We provide this manual only as a courtesy to our valuable customers

Customers who wish to view their DVRs on line through their Android mobile device must follow these instructions step by step.

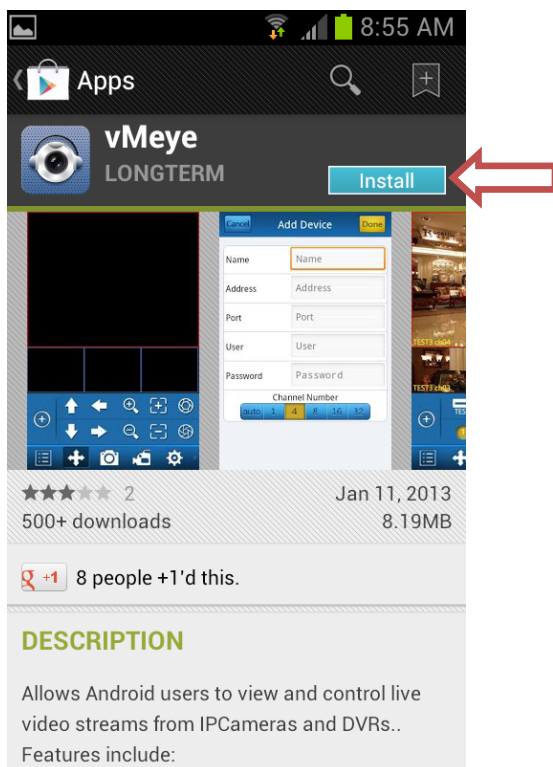
1. Go to Google Market on your device; in the search bar type in **vmeye**, and press search.



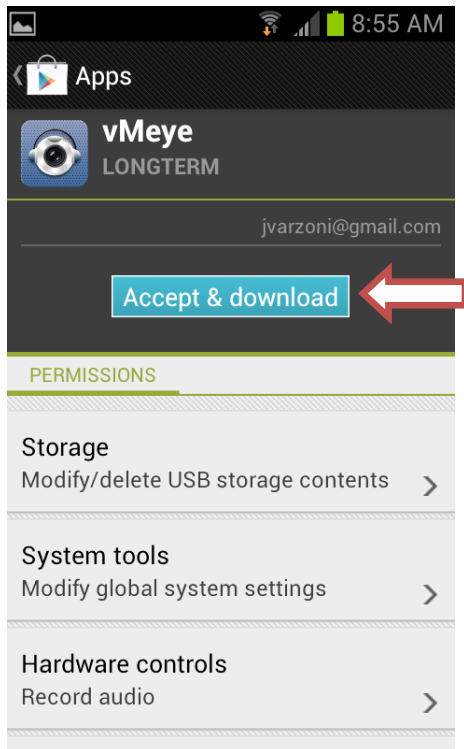
2. On the search result page, look for the vMeye free icon click on it.



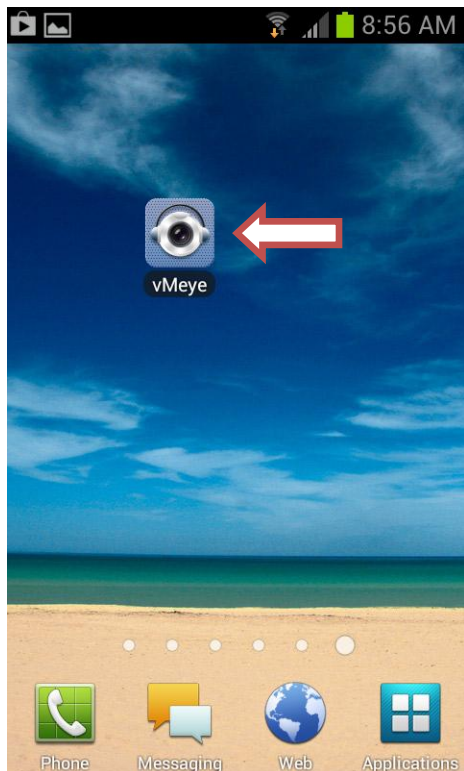
3. Click **Install**



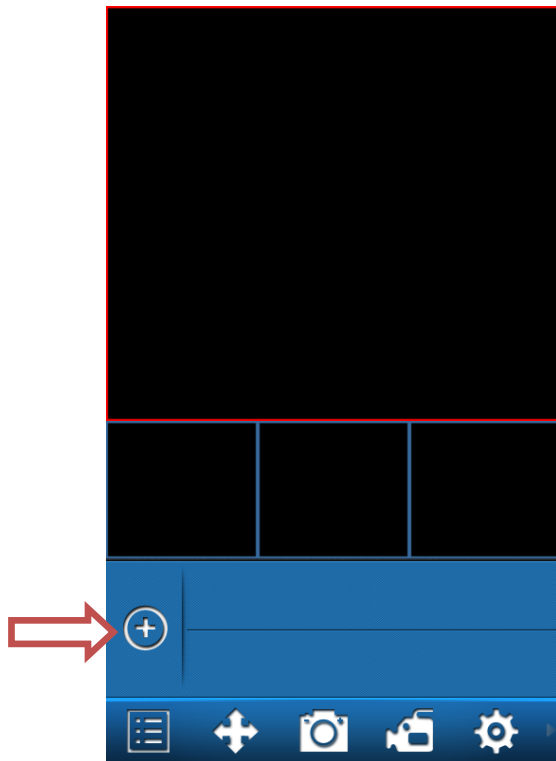
4. Click on **Accept and Download**



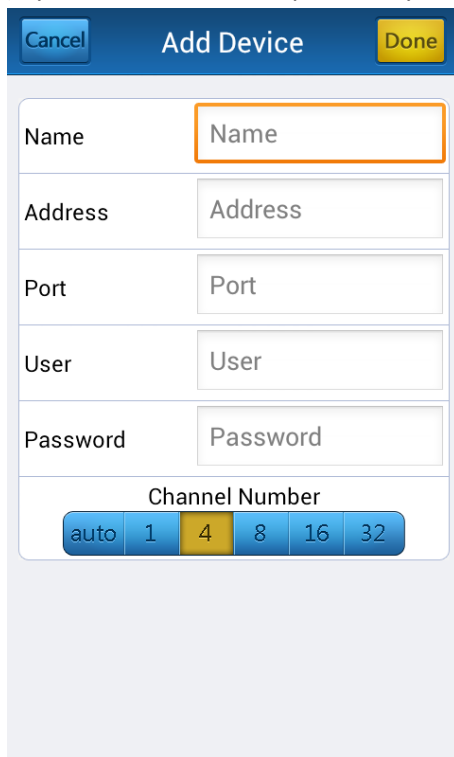
5. After the application is installed, go to the app screen on your device and look for the vMeye icon. Click on it to open the app.



6. After the app opens, click on the + (plus) sign to add a new server.

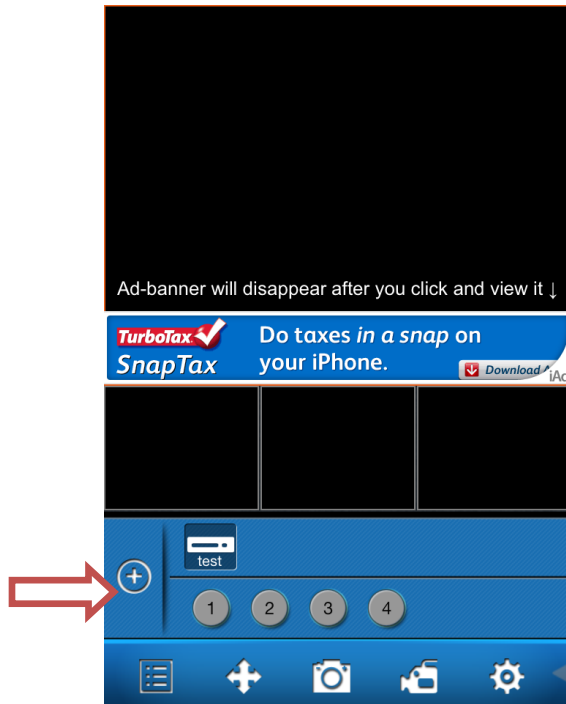


7. Enter the server information on the fields shown then click **Done**.
(if you wish to add multiple DVRs you can do so repeating the previous steps)



Add Device	
Name	<input type="text" value="Name"/>
Address	<input type="text" value="Address"/>
Port	<input type="text" value="Port"/>
User	<input type="text" value="User"/>
Password	<input type="text" value="Password"/>
Channel Number	
<div>auto 1 4 8 16 32</div>	

- After the server information is saved, you will see a list of the DVRs added at the bottom. Click on the DVR name and a list of cameras will appear (numbered circles underneath the DVR name).



- Click on the camera you wish see. You are now able to see the selected camera on the screen. (You can select multiple cameras to be viewed at the same time by repeating this step)

